

Surface Mount Frequency Mixer

ADE-3GL+

Level 7 (LO Power +7 dBm) 2100 to 2600 MHz



CASE STYLE: CD541

Maximum Ratings

Operating Temperature	-40°C to 85°C
Storage Temperature	-55°C to 100°C
RF Power	50mW
IF Current	40mA
Permanent damage may occur if any of these limits are exceeded.	

Pin Connections

LO	4
RF	6
IF	3
GROUND	1,2,5

Features

- low conversion loss, 6.0 dB typ.
- good L-R isolation, 34 dB typ.
- low profile package
- aqueous washable
- low cost
- protected by U.S. Patent 6,133,525

Applications

- PCMCIA cards
- ISM

+RoHS Compliant

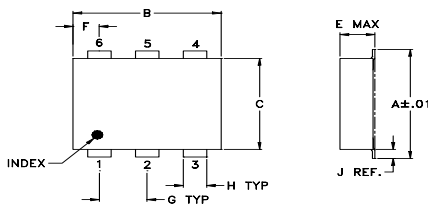
The +Suffix identifies RoHS Compliance. See our web site for RoHS Compliance methodologies and qualifications



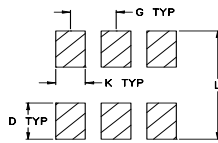
Available Tape and Reel at no extra cost

Reel Size	Devices/Reel
7"	20, 50, 100, 200, 500
13"	500, 1000

Outline Drawing



PCB Land Pattern

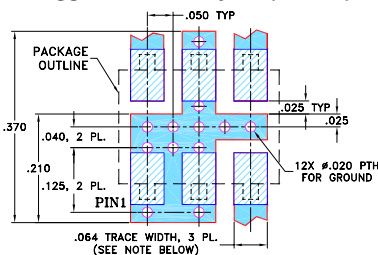


Suggested Layout, Tolerance to be within ±.002

Outline Dimensions (inch/mm)

A	B	C	D	E	F	G
.272	.310	.220	.100	.082	.055	.100
6.91	7.87	5.59	2.54	2.08	1.40	2.54
H	J	K	L	wt		
.030	.026	.065	.300	grams		
0.76	0.66	1.65	7.62	0.15		

Demo Board MCL P/N: TB-02 Suggested PCB Layout (PL-051)



- NOTES: 1. TRACE WIDTH IS SHOWN FOR ROGERS RO4350B WITH DIELECTRIC THICKNESS .030" ± .002"; COPPER: 1/2 OZ. EACH SIDE. FOR OTHER MATERIALS TRACE WIDTH MAY NEED TO BE MODIFIED.
2. BOTTOM SIDE OF THE PCB IS CONTINUOUS GROUND PLANE.

- DENOTES PCB COPPER LAYOUT WITH SMOBC (SOLDER MASK OVER BARE COPPER)
- DENOTES COPPER LAND PATTERN FREE OF SOLDER MASK

Notes

- A. Performance and quality attributes and conditions not expressly stated in this specification document are intended to be excluded and do not form a part of this specification document.
B. Electrical specifications and performance data contained in this specification document are based on Mini-Circuit's applicable established test performance criteria and measurement instructions.
C. The parts covered by this specification document are subject to Mini-Circuit's standard limited warranty and terms and conditions (collectively, "Standard Terms"); Purchasers of this part are entitled to the rights and benefits contained therein. For a full statement of the Standard Terms and the exclusive rights and remedies thereunder, please visit Mini-Circuit's website at www.minicircuits.com/MCLStore/terms.jsp

Electrical Specifications

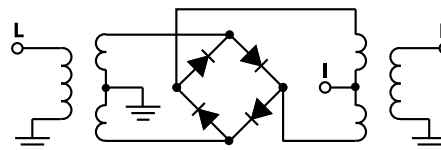
FREQUENCY (MHz)		CONVERSION LOSS (dB)			LO-RF ISOLATION (dB)		LO-IF ISOLATION (dB)		IP3 at center band (dBm)
LO/RF	IF	\bar{X}	σ	Max.	Typ.	Min.	Typ.	Min.	Typ.
2100-2600	DC-600	6.0	0.25	8.8	34	25	20	7	17

1 dB COMP.: +1 dBm typ.

Typical Performance Data

Frequency (MHz)		Conversion Loss (dB)	Isolation L-R (dB)	Isolation L-I (dB)	VSWR RF Port (:1)	VSWR LO Port (:1)
RF	LO	LO +7dBm	LO +7dBm	LO +7dBm	LO +7dBm	LO +7dBm
2015.79	2045.79	5.55	36.00	12.90	2.04	1.52
2121.05	2151.05	5.41	35.10	15.00	1.94	1.48
2226.32	2256.32	5.57	34.30	17.50	2.23	1.40
2300.00	2330.00	5.86	34.50	19.40	2.46	1.39
2320.00	2350.00	5.98	34.50	19.90	2.55	1.39
2331.58	2361.58	5.94	34.50	20.20	2.61	1.39
2350.00	2380.00	5.96	34.60	20.70	2.68	1.39
2380.00	2410.00	5.96	34.40	21.60	2.84	1.39
2400.00	2430.00	6.06	34.30	22.10	2.88	1.40
2430.00	2460.00	6.05	34.10	23.00	3.01	1.40
2436.84	2466.84	6.10	34.00	23.20	3.01	1.40
2450.00	2480.00	6.01	33.90	23.60	3.06	1.41
2480.00	2510.00	6.03	33.80	24.70	3.16	1.41
2500.00	2530.00	6.02	33.80	25.70	3.21	1.44
2530.00	2560.00	6.03	33.50	26.80	3.26	1.46
2542.11	2572.11	6.20	33.60	27.30	3.16	1.48
2550.00	2580.00	6.07	33.60	27.80	3.32	1.50
2580.00	2610.00	6.00	33.50	28.70	3.32	1.51
2600.00	2630.00	6.10	33.40	28.90	3.32	1.51
2630.00	2660.00	6.15	33.20	28.70	3.44	1.56

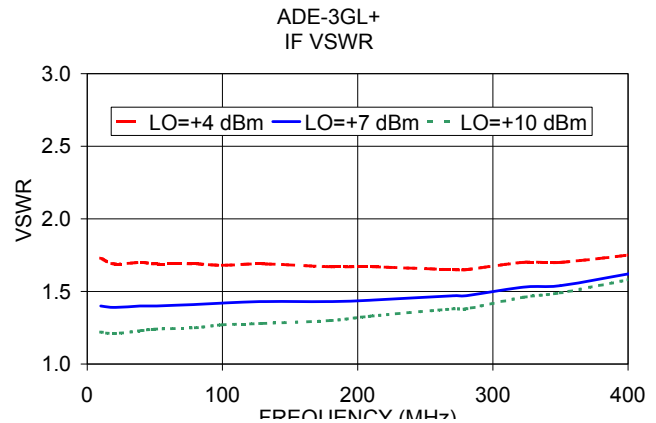
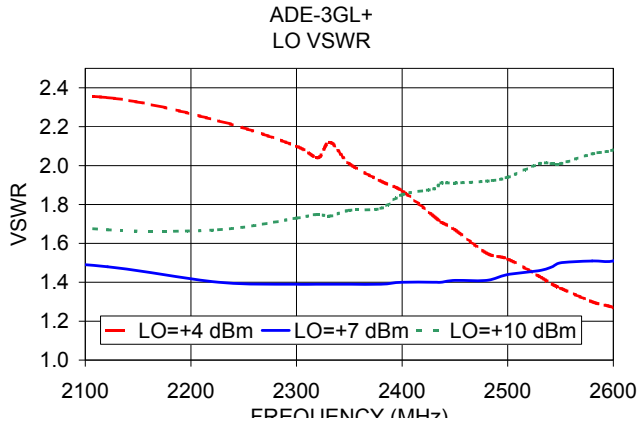
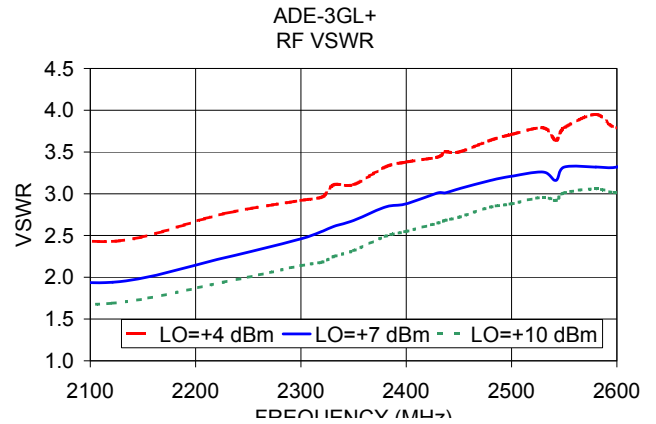
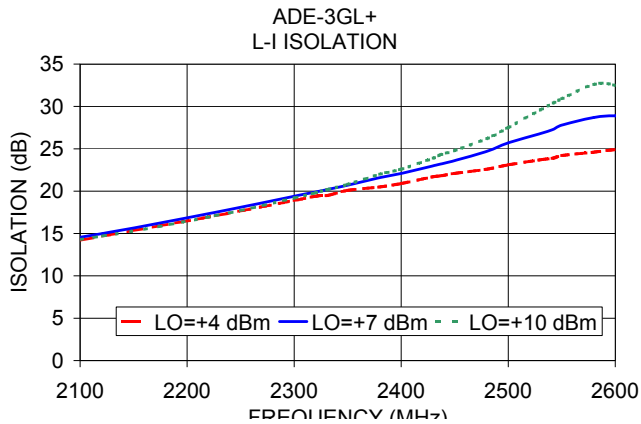
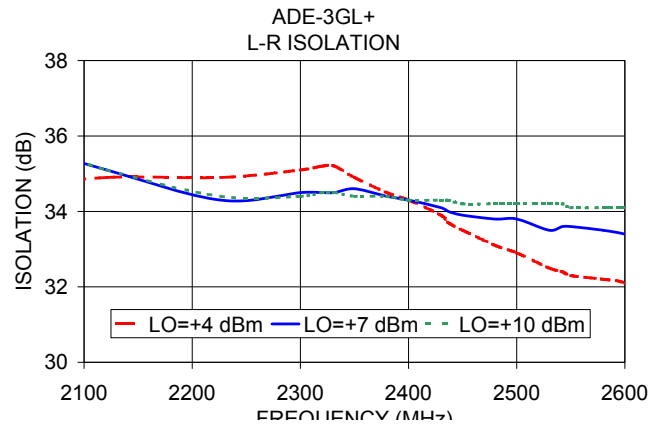
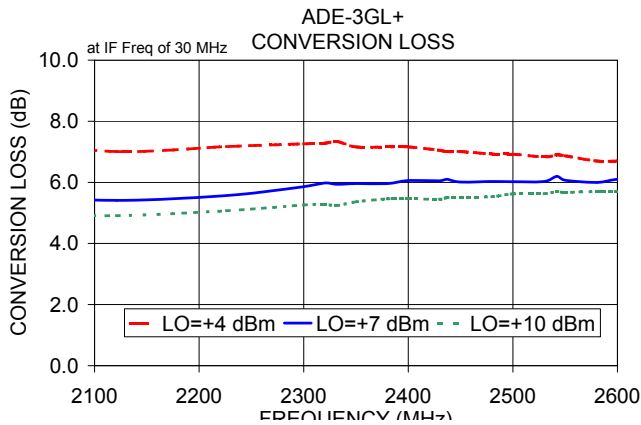
Electrical Schematic



Mini-Circuits®

www.minicircuits.com P.O. Box 350166, Brooklyn, NY 11235-0003 (718) 934-4500 sales@minicircuits.com

REV. H
M151107
ADE-3GL+
WL/TD/CP/AM
150518
Page 1 of 2



Notes

- A. Performance and quality attributes and conditions not expressly stated in this specification document are intended to be excluded and do not form a part of this specification document.
- B. Electrical specifications and performance data contained in this specification document are based on Mini-Circuit's applicable established test performance criteria and measurement instructions.
- C. The parts covered by this specification document are subject to Mini-Circuit's standard limited warranty and terms and conditions (collectively, "Standard Terms"); Purchasers of this part are entitled to the rights and benefits contained therein. For a full statement of the Standard Terms and the exclusive rights and remedies thereunder, please visit Mini-Circuit's website at www.minicircuits.com/MCLStore/terms.jsp

